



HM Prison &
Probation Service

Protecting children from those who may pose a risk.

Safeguarding through Assessment, Intervention, and Partnership

Claire Evans - Senior Probation officer

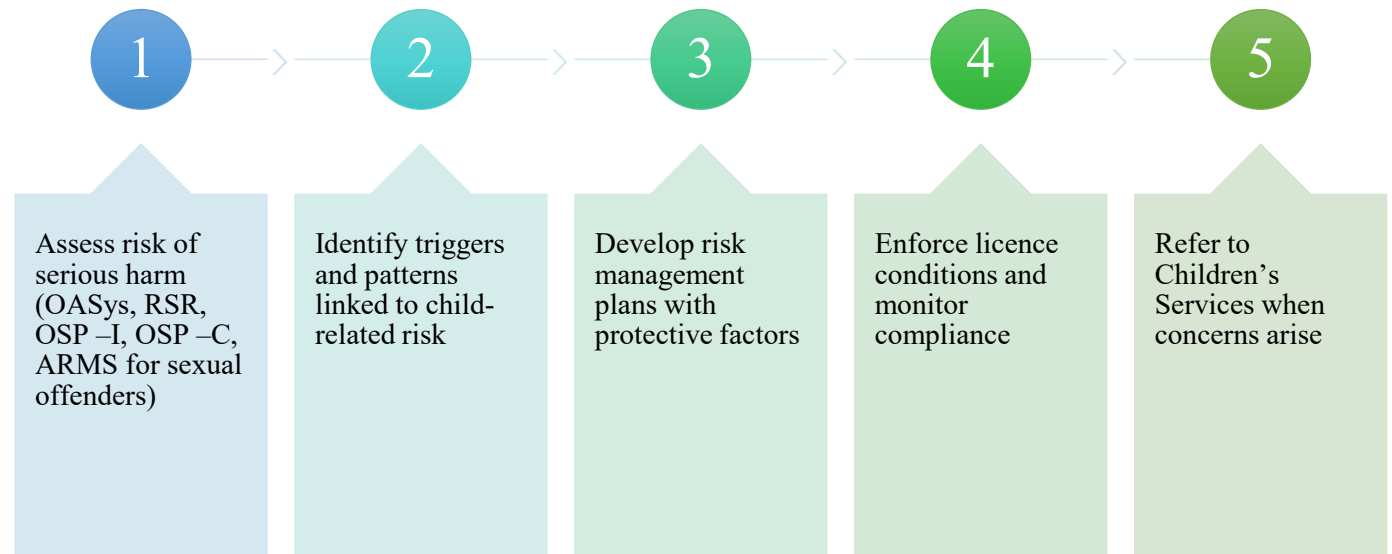
Somerset Probation Supervises 189 Registered Sexual Offenders in the Community

Probation has a statutory duty under MAPPA and safeguarding frameworks

Focus: **Risk assessment, risk management, and multi-agency collaboration**

Why this matters: Preventing harm and protecting vulnerable children

Key responsibilities



RISK ASSESSMENT TOOLS

OASYS

ARMS

MAPPA



INTERVENTIONS

Accredited programme Building Choices

Psychological support and therapy referrals

Structured supervision and monitoring

Behavioural contracts and internet restrictions

Sexual Offender Registration

Sexual Harm Prevention Order

Partnership working

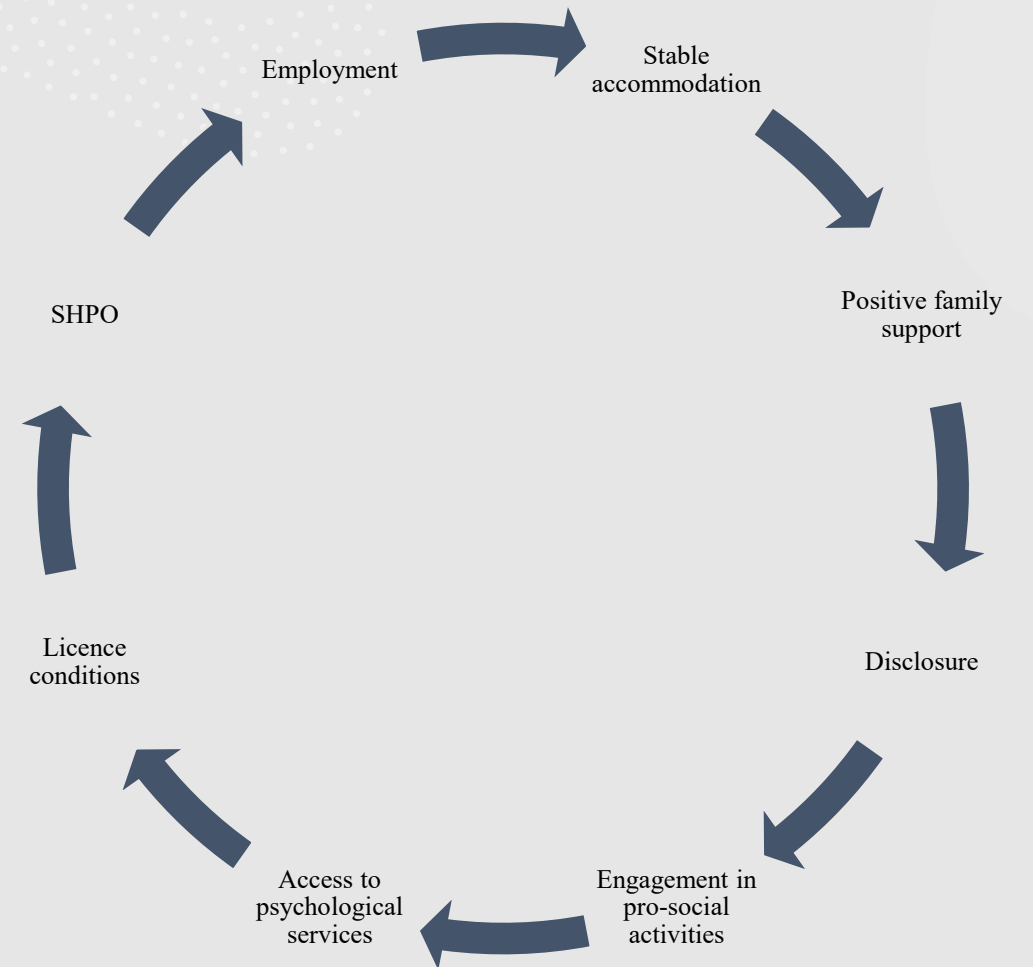
Children's
Services –
safeguarding
referrals

Police –
intelligence
sharing and
enforcement –
joint home visits
with MOSOVO
Officer's

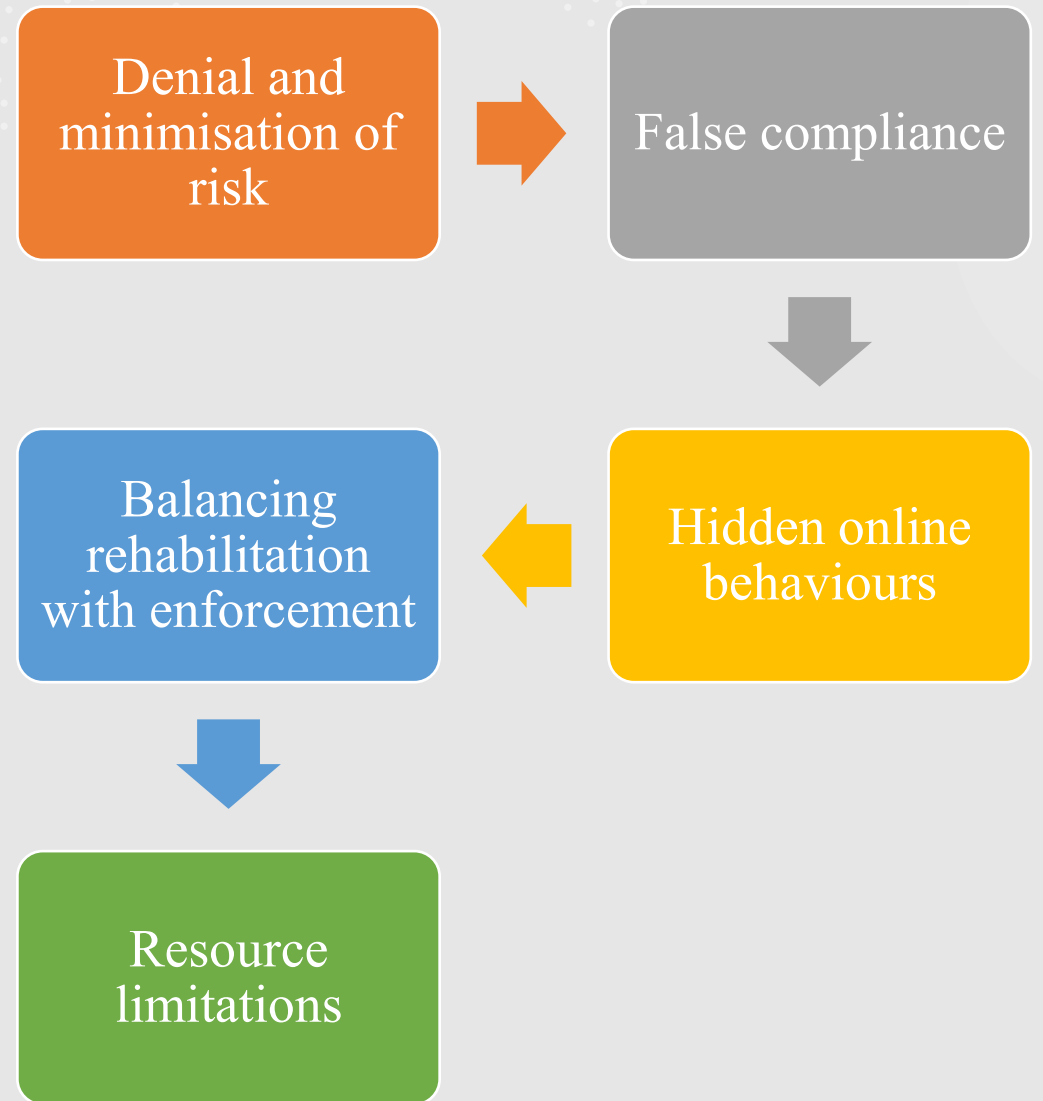
Health services –
mental health and
trauma support

Community
organisations –
social
reintegration

PROTECTIVE FACTORS



Challenges



Conclusion

Probation plays a critical role in safeguarding children.

Through assessment, intervention, and collaboration, risk can be managed

Ongoing vigilance and adaptability are essential

Contact Details

Claire Evans

Claire.evans2@justice.gov.uk